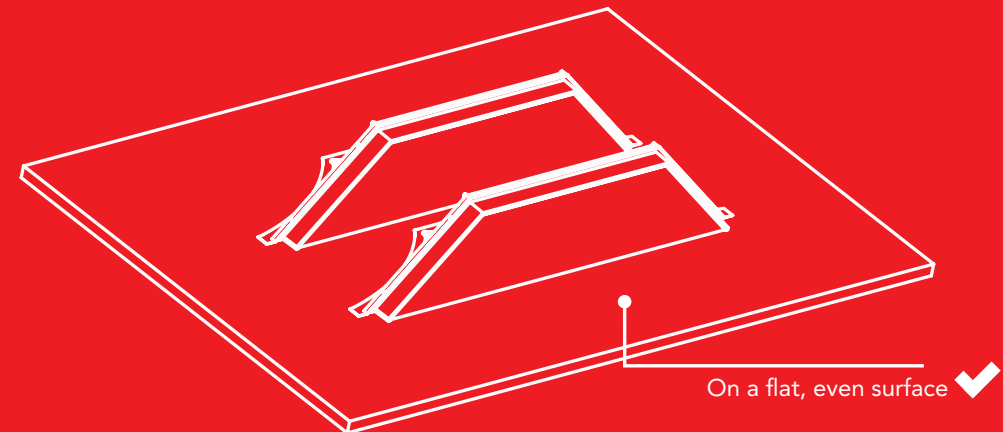
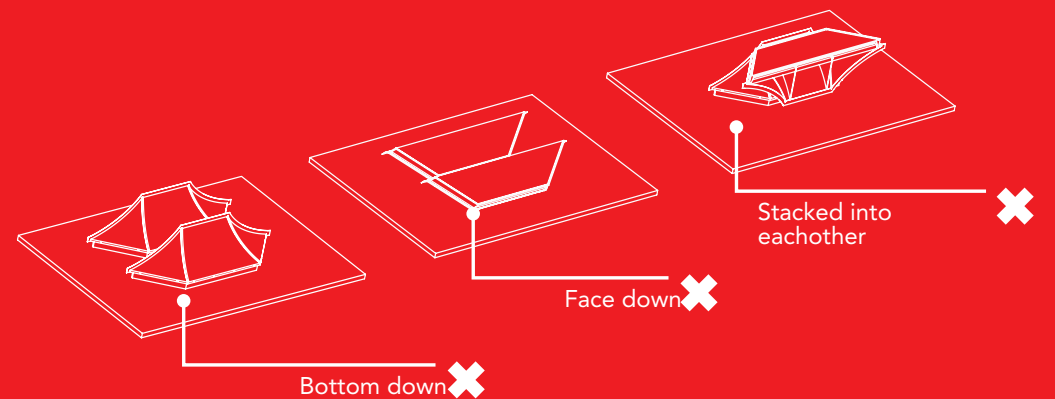
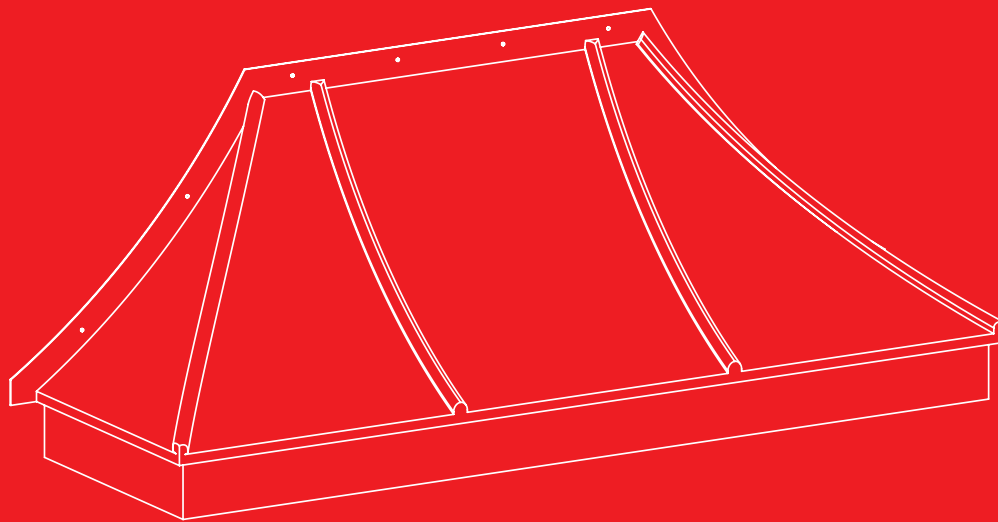


Bay Roof

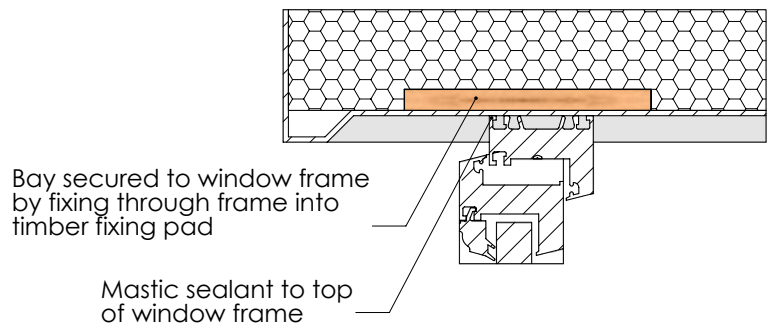
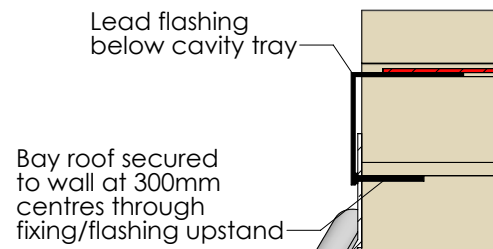
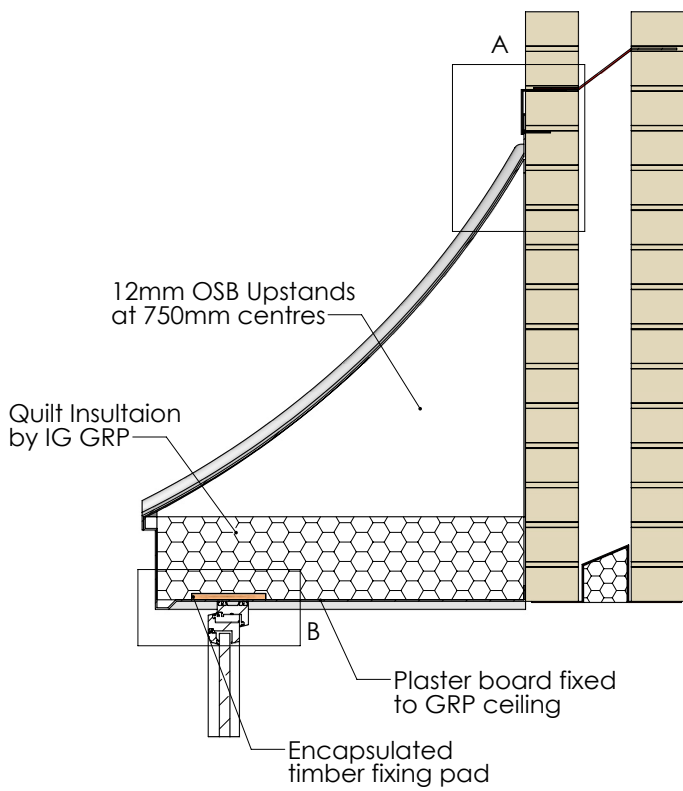
Transportation, Storage & Fitting Instructions (Enc)

In order to avoid damage, bay roof should be stored with the back face to the ground on a flat and even surface as shown, preferably under cover. Care should be taken when handling to avoid compromising the finished surface.

Due to the lightweight nature of the products, damage may occur in windy conditions. On no account should weight be put on them to hold them down.



**BAY ROOF FITTING
DETAIL - FLAT STYLE /
PITCHED STYLE**



**READY TO TILE
BAY FITTING DETAIL**

