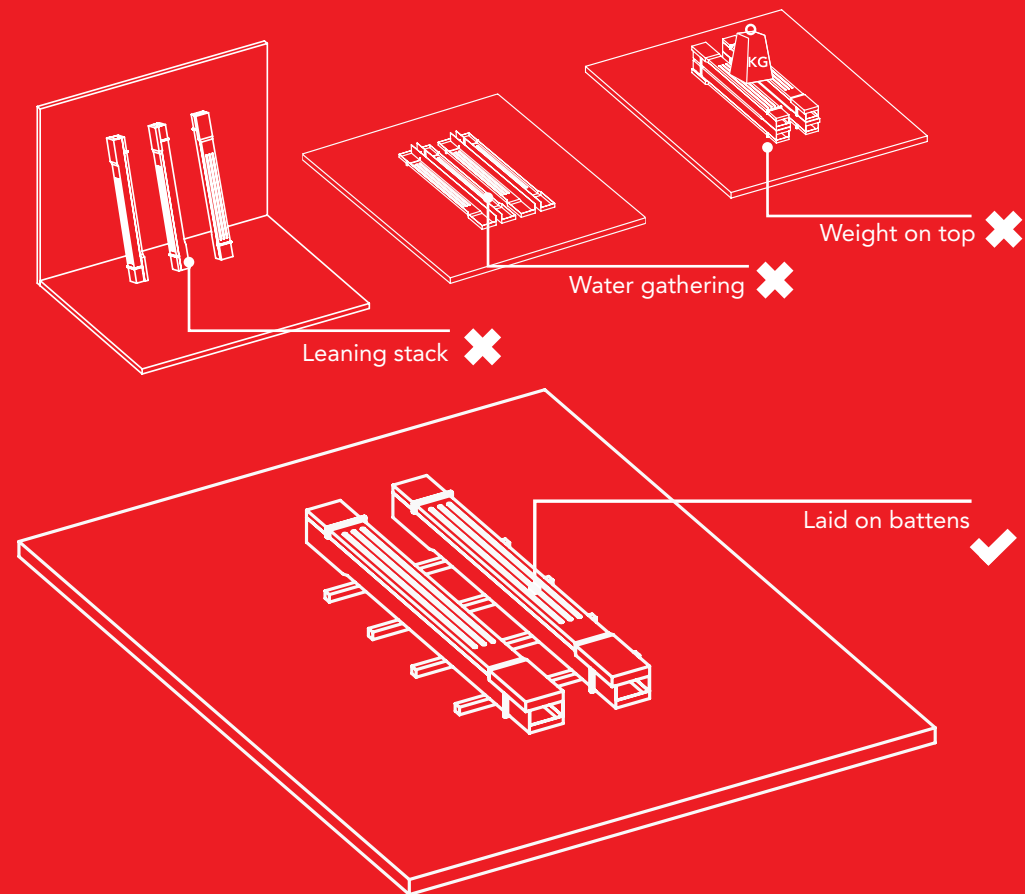


Door Surround

Transportation, Storage & Fitting Instructions (Enc)

In order to avoid damage, door surround should be stored with the back face to the ground on a flat and even surface as shown, preferably under cover. Care should be taken when handling to avoid compromising the finished surface.

Due to the lightweight nature of the products, damage may occur in windy conditions. On no account should weight be put on them to hold them down.



Door surround on brick wall detail

STEP 1

Header unit positioned on wall with base returning under lintel as far as door frame.

This is then secured to fixing batten (Previously installed by contractor).

STEP 2

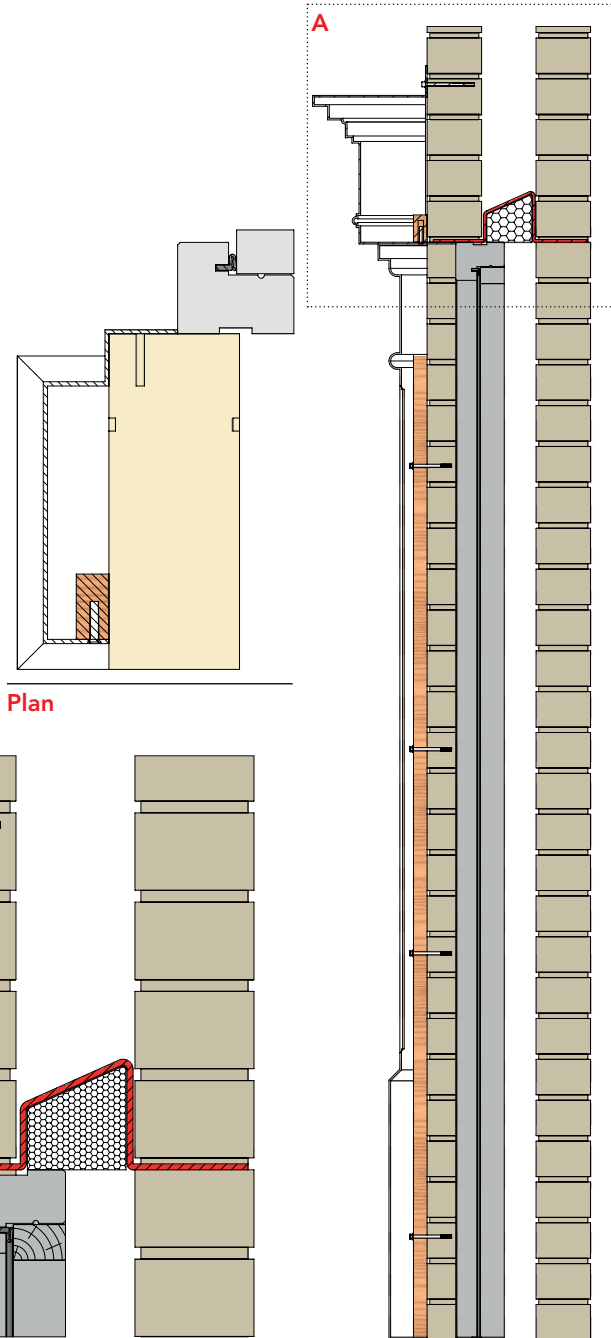
Header unit fixed to wall through fixing/flashing upstand using suitable fixings at 300mm ctrs.

Mastic sealant can be applied to back of fixing/flashing upstand before securing to wall.

STEP 3

Pillasters positioned under header unit, reveal returns around brickwork as far as door frame. Reveal is then secured to brickwork using suitable fixing.

Pillaster then secured to fixing batten (previously installed by contractor) using suitable fixings at 300mm ctrs.



Detail A

Section

Door surround on rendered block wall

STEP 1

Header unit positioned on wall with base returning under lintel as far as door frame.

This is then secured to fixing batten (Previously installed by contractor).

STEP 2

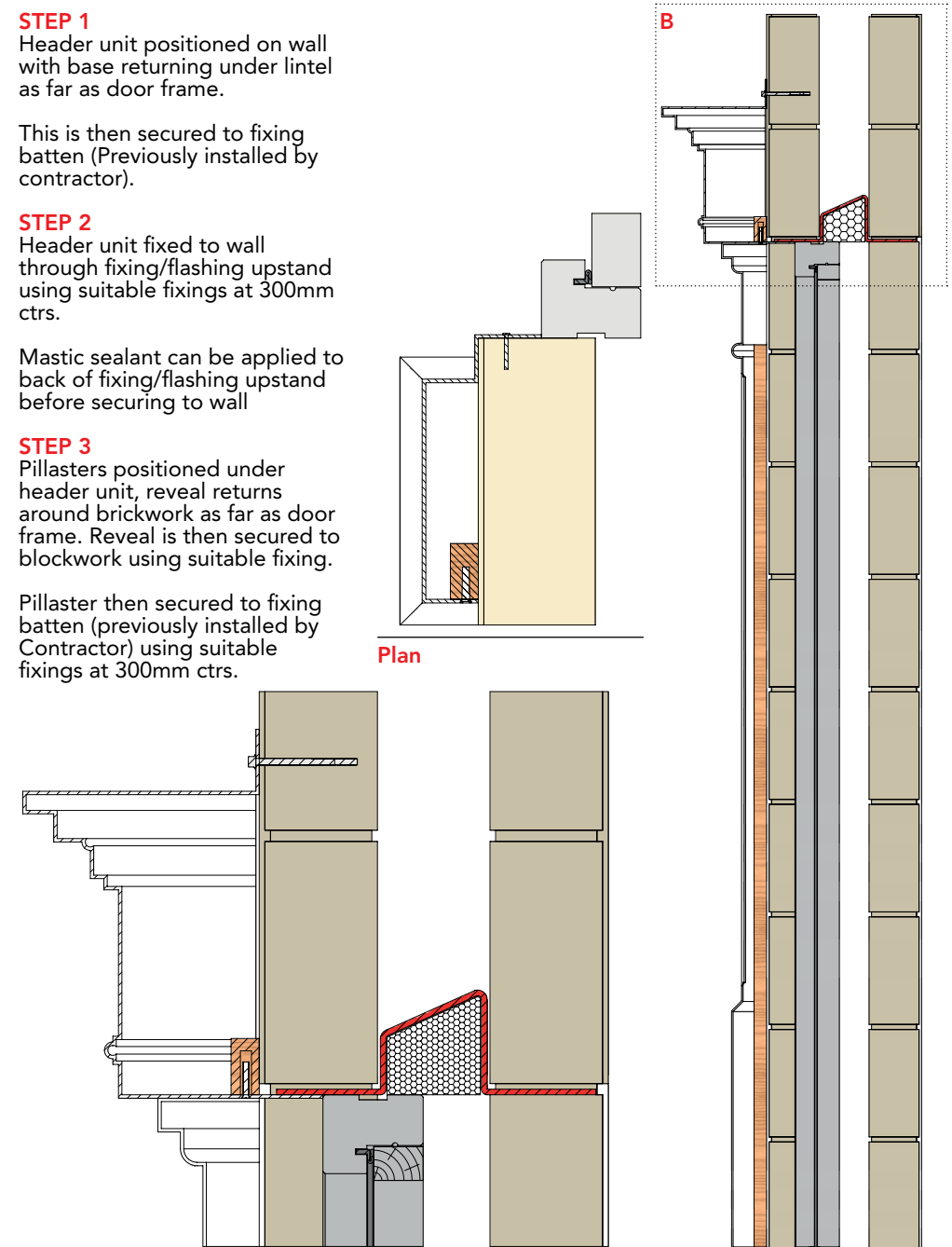
Header unit fixed to wall through fixing/flashing upstand using suitable fixings at 300mm ctrs.

Mastic sealant can be applied to back of fixing/flashing upstand before securing to wall.

STEP 3

Pillasters positioned under header unit, reveal returns around blockwork as far as door frame. Reveal is then secured to blockwork using suitable fixing.

Pillaster then secured to fixing batten (previously installed by Contractor) using suitable fixings at 300mm ctrs.



Detail B

Section